



MIDWEST
COLLEGIATE CYCLING CONFERENCE

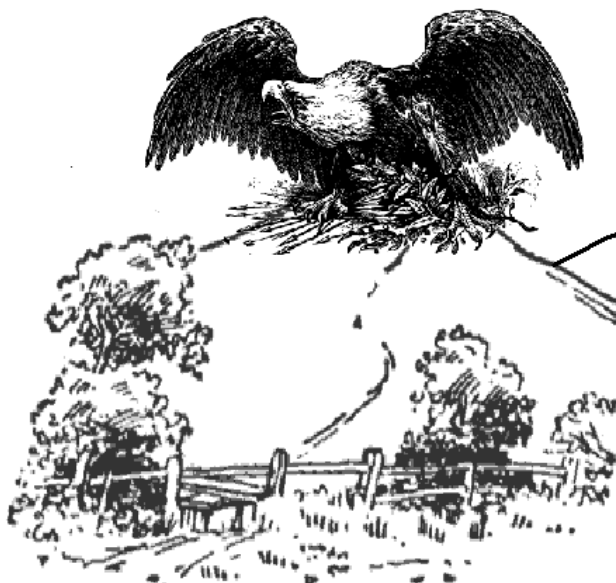


Purdue Cycling Club

Presents:

The 5th Annual

Eagle Hill Road Race and Team Time Trial



2011 Race Bible

A USA Cycling Event

USCF Permit: 2011-915

RACES HELD RAIN OR SHINE

General Information

ETIQUETTE

This race is held where we may attract non-cycling spectators and takes place on a land preserve /public park. Please be on your best behavior since you are representing our event, your team, and cycling in general. We would like to leave a LASTING POSITIVE impression on everyone attending this event! Please watch your language.

No Littering! No Public Urination- Porta-Jons are available by registration!

CENTERLINE

The centerline rule will be enforced. If no painted centerline marking exists, riders must keep to the right side of the road **at all times. All roads are open to traffic.** Obey and respect all police officer, official, and volunteer requests.

Cross the centerline and you will be disqualified!

HELMETS

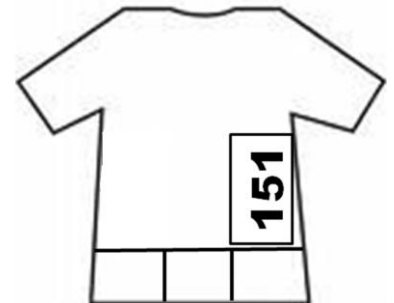
Helmets must be worn and secured at all times while riding a bicycle.

RACE NUMBERS

Please bring the race number that you have already been issued.

If this is your first race or have upgraded recently, we will give you a number that will identify your category and be used for the rest of the season or until you upgrade.

Number should be pinned securely on the RIGHT SIDE, just above the pocket!



COMBINED CATEGORIES

During the road race several categories will be on the road at one time. We will start each race with enough spacing that one field should not catch another. However, if this occurs, please allow the faster field room to pass- lead cars and officials will assist in this if it occurs. Please try not to mingle in with other races.

PRIZES

Coveted MWCCC points! Points break down can be found online on the conference website: mwccc.org

Wheel Support

There will be a follow vehicle for the road race- **wheels in wheels out**

Hotels

There are numerous hotels in the Lafayette/West Lafayette area
Lafayette:

[Red Roof Inn Discount Hotel](http://www.redroof.com) www.redroof.com - (765) 448-4671
[TownePlace Suites Lafayette](http://marriott.com) marriott.com - (765) 446-8668
[Days Inn Lafayette](http://www.daysinn.com) www.daysinn.com - (765) 446-8558
[Holiday Inn Express Lafayette Hotel](http://www.hiexpress.com) www.hiexpress.com - (877) 863-4780
[Holiday Inn Select-Lafayette](http://hisc.com) hisc.com - (765) 423-1000
[Signature Inn-Lafayette](http://www.jamesoninns.com) www.jamesoninns.com - (765) 447-4142
[Knights Inn](http://www.knightsinn.com) www.knightsinn.com - (765) 447-5611
[TC & J Hospitality](http://www.hiexpress.com) www.hiexpress.com - (765) 449-4808
[Holiday Inn Select Lafayette-City Centre Hotel](http://www.holidayinn.com) www.holidayinn.com - (877) 863-4780
[Baymont Inn & Suites Lafayette](http://www.baymontinns.com) www.baymontinns.com - (877) 229-6668
[Motel 6](http://www.motel6.com) www.motel6.com - (765) 447-7566
[Super 8](http://www.super8.com) www.super8.com - (765) 447-5551

West Lafayette:

[University Plaza Hotel](http://www.universityplazahotelwestlafayette.com) www.universityplazahotelwestlafayette.com - (765) 463-5511
[Union Club Hotel](http://www.purdue.edu) www.purdue.edu - (765) 494-8900
[Hilton Garden Inn West Lafayette](http://www.hiltongardeninn.com) www.hiltongardeninn.com - (765) 743-2100
[Campus Inn West Lafayette](http://www.campusinnatpurdue.com) www.campusinnatpurdue.com - (765) 743-9661
[Econo Lodge](http://www.econolodge.com) www.econolodge.com - (765) 567-7100

Host housing may be available, please contact Todd to find out.

Hospitals

[Purdue University Student Health Center](http://www.purdue.edu) 601 Stadium Mall Dr, W. Lafayette - (765) 494-1724
[Lafayette Home Hospital](http://www.ste.org) www.ste.org - (765) 447-681
[St Elizabeth Medical Center](http://www.ste.org) www.ste.org - (765) 423-6011

Contacts

Todd Beeby (Race Director): tbeeby@purdue.edu (513) 702-0132
Naveen John (Assistant Director): ntjohn@purdue.edu

Sunday April 3, 2011 at Ross Hills Park

Screamin' Eagle Team Time Trial

Directions

From West Lafayette:

Head southwest on IN-43/N River Rd/US-231

Turn right at S River Rd , then turn left to stay on S River Rd (for 4.0 mi)

Continue straight onto Division Rd (for 4.3 mi)

Turn left at S 875 W (for 0.5 mi)

S 875 W turns right and becomes W 50 S

Park entrance will be on the left

GPS: Lat: 40.407465 Lon:-87.072272

Parking

Parking will be at Ross Hills Camp by the pavilion. Please do not park on the grass!

Registration

Registration will be held at the same time as registration for the road race- at Ross Hills Camp under the pavilion. Registration is \$20 per team- bring a signed release waiver (it's on the MWCCC site!) Registration opens at 7:30 AM EST and closes at 8:20!!! Each team will be given a start time, please be at the start line 5-10 minutes before your time!

A teams must have at least 3 riders, max 4, with time taken on the 3rd. B-D teams may have from 2-4, time taken on the 2nd rider or 3rd rider depending on number started. No composite teams.

Course Description

The course is out and back for a total of 10 miles with a small climb at the end. This will be an open course and the yellow line rule will apply. Staging will take place on CR 875- just outside the park.

Start Times:

The Purdue Men's D team will go off at 8:30 AM

Proceeding teams will follow at 1 minute intervals and will be ordered as such:

Men D: 8:30 (With Purdue first)

Men C: 8:45

Women B/C: 9:00

Women A: 9:10

Men B: 9:20

Men A: 9:35 (With Purdue being last)

Allotted time for each category was based on the number of teams from last year. However, extra time has been included should more teams show up.

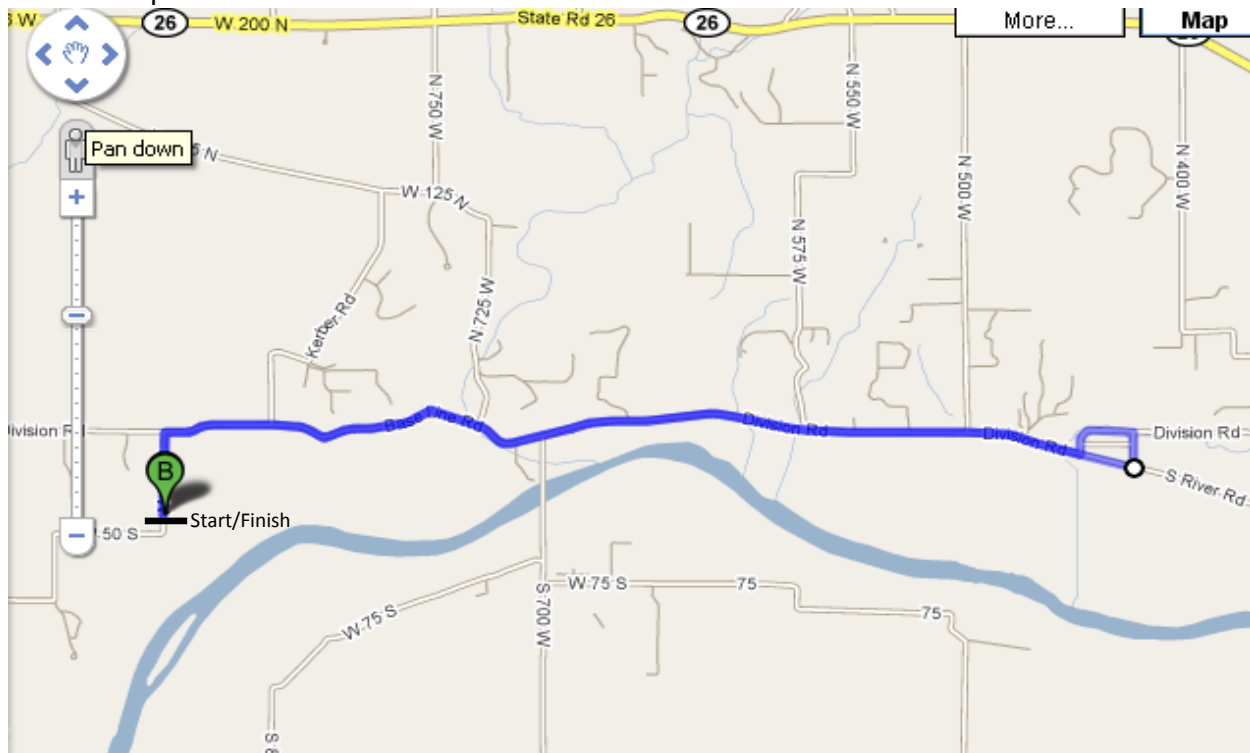
Spectators:

The best viewing area would be on top of the climb on Division road, anywhere along Division road, or at the corner on 875. Please make sure to park off of the road.

TTT Elevation Profile:



TTT Map:



Course directions:

Start: 875L .4 miles

Right: Division (Baseline) Rd: 4.5 mi

Left: Patrick Ln: .2 mi

Left: Division Rd: .3 mi

Right: Division (Baseline) Rd: 4.3 mi

Left: 875L .4 mi

Total: 10.3 miles approx.

Saturday, April 3, 2011 at Ross Hills Park

Eagle Hill Road Race

Directions and Parking

Same as directions under the TTT section. Again, please do not park on the grass!

Registration

Registration for the Road Race is \$13 and opens at 7:30 AM (EST) and closes 20 minutes before each race begins. Same place as the TTT registration. Bring a signed release waiver if you did not do the TTT.

Course Description

Same course as the previous two years- the course features a challenging climb on W 125 N and fast descent on Division Rd. Each lap is approximately 4 miles (black line on the map). There will be a neutral roll out to the first turn(1.9 mi) off of Division road (blue dashed line)- laps will start counting down on the finishing climb (ie: D's will see 4 laps to go first time coming up the climb- so they'll climb it 5 times)

Start will take place at the same spot as the TTT start. Finish will be on top of Eagle Hill

Start Times:

Men D	10:30 AM	4 laps/18 miles.
Women B/C	10:31 AM	4 laps/18 Mi.
Men C	11:45 AM	6 laps/26 Mi.
Women A	11:46 AM	5 laps/22 Mi.
Men A	1:45 PM	9 laps/38 Mi.
Men B	1:46 PM	7 laps/30 Mi.

Times may be pushed to allow lower categories to finish or in case of unforeseen situations

Feedzone parking:

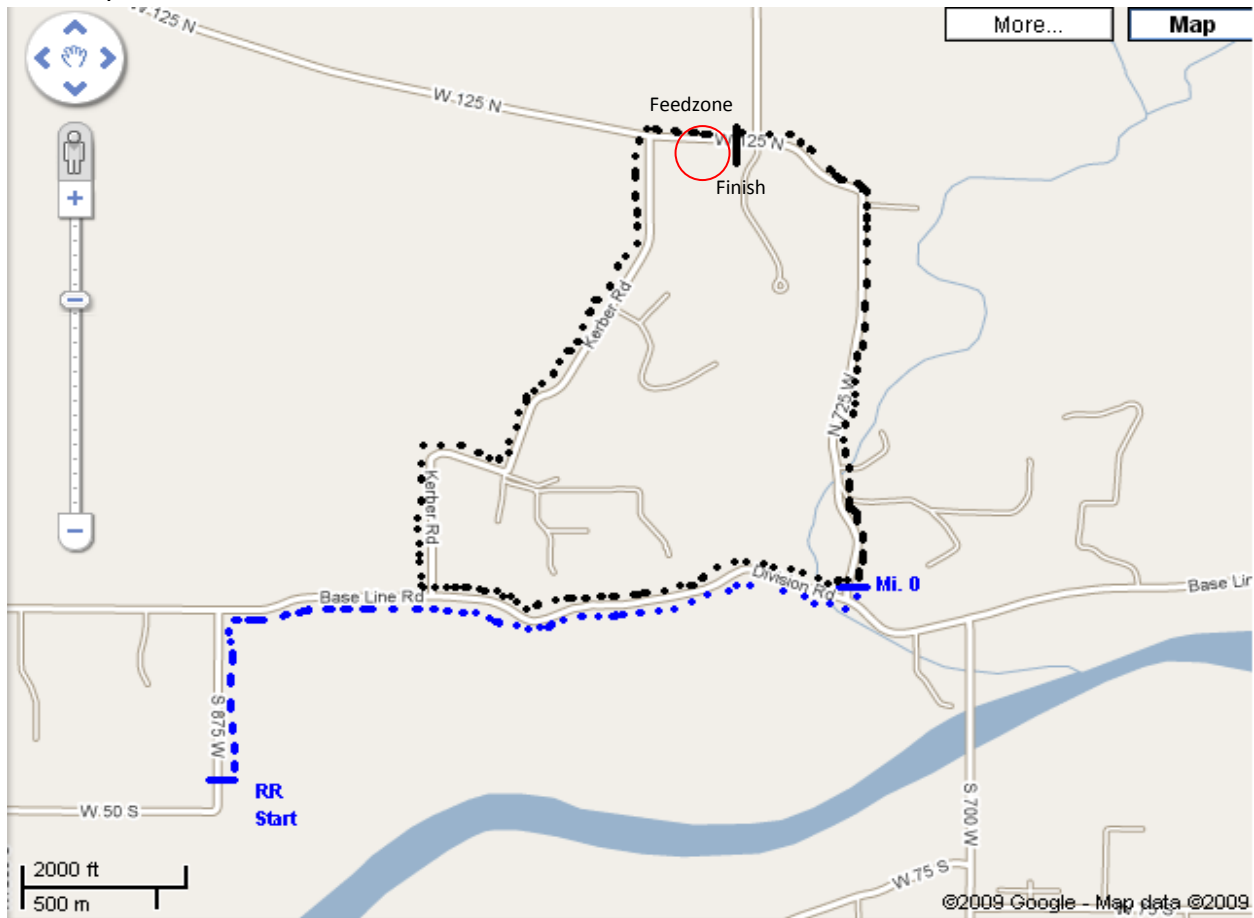
The feedzone is located on the RIGHT side of the road just past the finish line. If you will be driving to the finish line area please park off of the road on County Road N 750 W. Please do not park on the race course!

NO LITTERING ON THE COURSE! Please keep wrappers in your pockets!

Spectators:

The best spot to view the race is on the climb and by the finish line just before CR N 750 W. If you drive to this spot please look out for racers and park off of the road on N 750 W.

RR map:



Road Race Elevation:



Course:

Roll out- Start: 875, right Division Rd, left on 725 (1.9 mi) Top of the hill and the start of laps is ~1.3 miles from this corner.

Race:

Left on 725, veer left on to 125, left on Kerber Rd, left on Division Rd (~4 miles)